

93 S.E

6.8
2.5

950
2.25
92.5

8.7 NE
6.8
1.9

950
1.9
93.1
91.5
1.6

8.5 NW
6.8
1.7

95
1.7
94.3
91.5
2.8

9.4
6.8
2.6

96.28
5.51
7
95
2.6
92.4
91.5
1.0

100
6.8
3.2

950
3.2
91.8

8.34
5.1
3.24

8.00
5.1
2.90

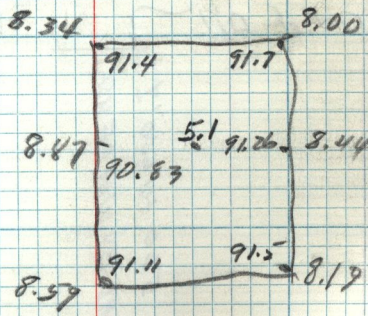
8.44
5.1
3.34

8.20
5.1
3.10

8.59
5.1
3.49

8.87
5.1
3.77

94.60
3.24
1.36



96.02

97.33
55.1
96.82

97.33